

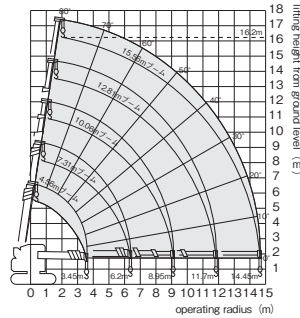
Crawler Crane 4.9ton Glass Vacuum Lifter·Gantry Crane

Crawler Crane 4.9ton

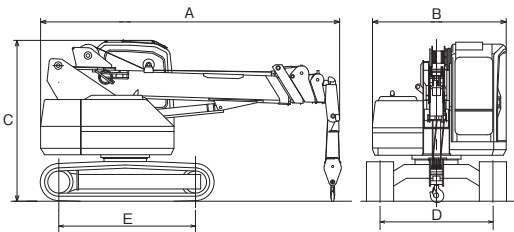


LC755

Working Range Diagram



Dimension



Specifications

| | | |
|------------------------------------|---------------------------------|----------------|
| Make | MAEDA | |
| Model | LC755 | |
| Total weight (kg) | 8,800 | |
| Dimensions (mm) | Overall length | A 4,977 |
| | Overall width | B 2,320 |
| | Overall height | C 2,700 |
| | Track gauge | D 1,870 |
| | Length of track on ground | E 2,868 |
| Performance | Min. ground clearance | 380 |
| | Max. lifting load (ton × m) | 4.9 × 2.1 |
| | Max. operating radius (m × ton) | 14.45 × 0.15 |
| | Max. lifting height (m) | 16.2 |
| | Boom length (mm) | 4,560 ~ 15,560 |
| | Boom telescopic speed (sec/m) | 25/11.0 |
| Swing speed (rpm) | 2.1 | |
| Travel speed (km/h) | 2.9 | |
| Fly wheel house power (kW[PS]/rpm) | 44.1 [60 ps]/2,000 | |
| Fuel tank capacity (ℓ) | 80 | |

Glass Vacuum Lifter



Specifications

| | |
|--|------------|
| Model | Winlet 600 |
| Max capacity (kg) | 600 |
| Max capacity on side (kg) | 300 |
| Total weight excl. counterweights (kg) | 865 |
| Total weight incl. counterweights (kg) | 1,060 |
| External width (mm) | 875 |
| External width with twin wheels (mm) | 1,250 |
| External length (mm) | 1,580 |
| External height (mm) | 1,550 |
| Min/max extension (mm) | 600/ 1,300 |
| Max lifting height (mm) | 2,800 |
| Suction cups (mm) | 4 × Φ385 |

Gantry Crane



Specifications

| | | |
|---------------|-----------------------------|-------|
| Model | MT-II-1 | |
| Capacity (kg) | 1,000 | |
| Dimensions | Total length (mm) | 2,100 |
| | Total Width (mm) | 3,100 |
| | Effective Width (mm) | 2,100 |
| | Total height (mm) | 3,000 |
| | Effective crane height (mm) | 2,000 |