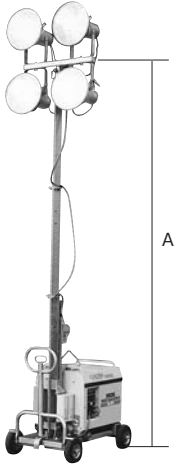


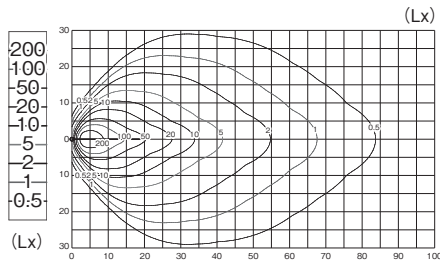
Nishio Tellastar Series (Engine)

Mini Tellastar (Engine)



NTC-46W

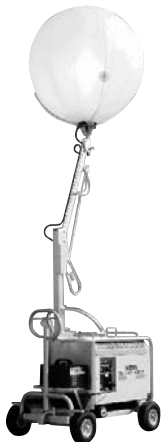
■ Illuminated Area



■ Specifications

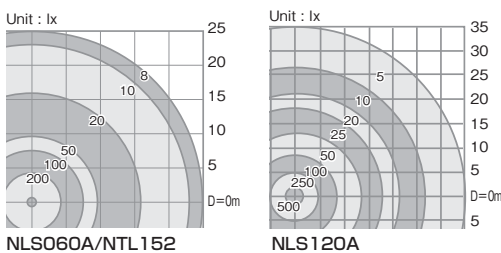
Make		NISHIO	
Model	NTC-46W	NTC-46W-M	
Bulb Capacity (W×bulbs)	400×4	220×4	
Bulb Configuration	Mercury	Ceramic Metal Halide	
Bulb Output (Lumens)	20,500 × 4	20,000 × 4	
Dimension	Length (mm)	1,055	
	Width (mm)	860	
	Height (mm)	2,065	
Max. Height (mm)	A 3,400		
Generator	Generator Model	SDG2200S- II	YDG250VS
	Fuel Type	Diesel	
	Tank Capacity (ℓ)	11.5	15
Max. Time for continuous run (h)	16	19	
Weight (kg)	225	263	

Balloon Light (Engine)



(Engine)

■ Illuminated Area



■ Specifications

Make		NISHIO		
Model	NTL152	NLS060A	NLS120A	
Bulb Capacity (W×bulbs)	LED152×1	575×1	1,200×1	
Bulb Configuration	LED	Ark	Ark	
Lighting Area (m ²)	1,500	1,500	1,900	
Dimension	Length (mm)	1,100	1,100	1,100
	Width (mm)	780	780	780
	Max. Height (mm)	1,730	1,730	1,730
Max. Height (mm)	3,550	3,550	3,700	
Generator	Fuel Type	Diesel		
	Tank Capacity (ℓ)	11.5	11.5	11.5
Max. Time for continuous run (h)	25	25	18	
Weight (kg)	180	180	190	
Balliin diameter (mm)	850	850	1,350	

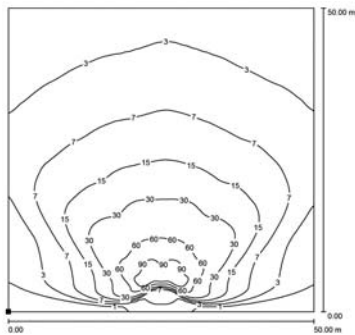
LED Mini Tellastar (Engine)



MT2

MT6

■ Illuminated Area



■ Specifications

Model	MT2	MT6
Min.dim (cm)	1270 × 980 × 1870	1270 × 980 × 2140
Max.dim (cm)	1470 × 1420 × 5500	1470 × 1420 × 5770
Dry Weight (kg)	320	340
Lamps power (W)	4 × 185	6 × 185
Lamps type	LED	
Certified illuminated area (m ²)	2,100	
Total lumen (Lm)	93,000	139,500
Certified wind speed resistance (km/h)	80	
Engine model	Yanmar L70N : 1 cyl. @3000/3600rpm	
Fuel type	Diesel	
Alternator	4 kVA - 220/240 V - 50/60 Hz	
inlet socket	16 A - 220/240 V - 50/60 Hz	
Tank capacity (ℓ)	18	
Running time (h)	20	
Trailers available	Hand trolley	