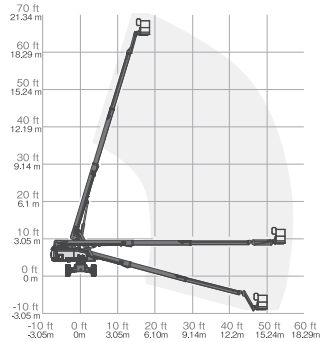


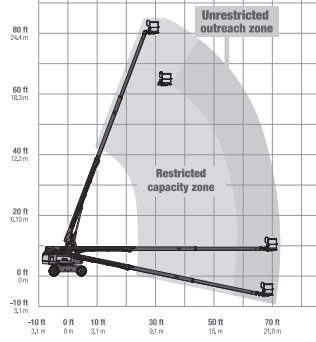
Boomlift (Engine)

Boomlift (Engine)

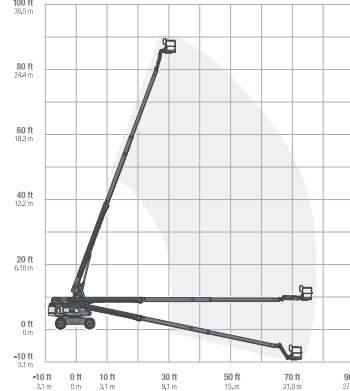
●S65



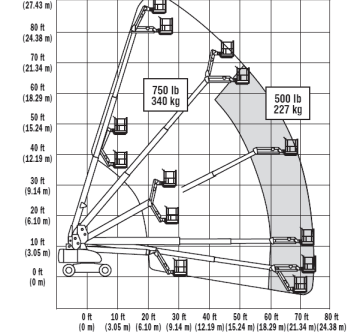
●S80



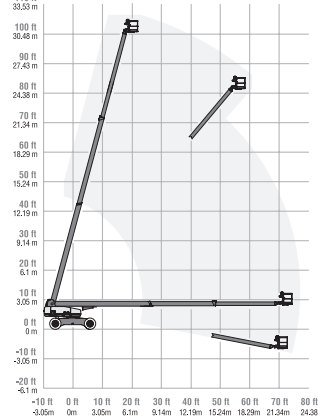
●S85



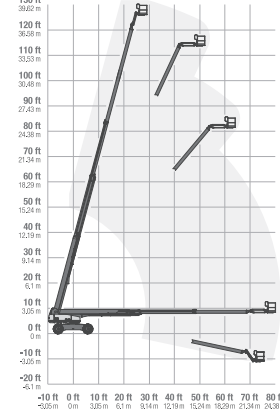
●860SJ



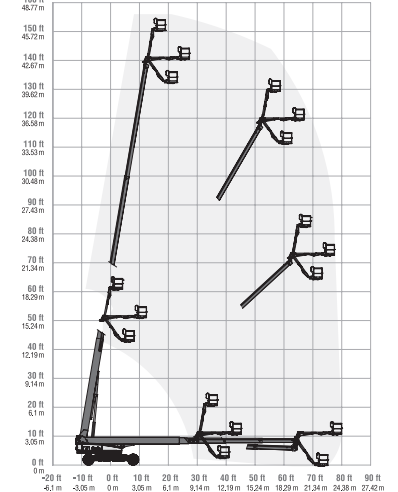
●S100



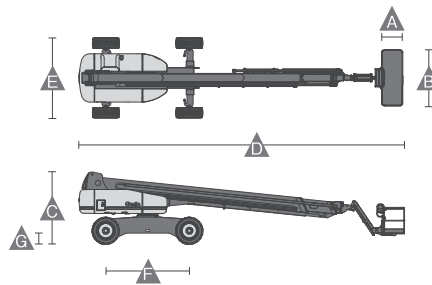
●S125



●SX150



S85



Specifications

Model	S65	S80	S85	860SJ	S100	S125	SX150
Max.Working Height (m)	21.81	26.38	27.90	28.21	32.48	40.15	48.33
Max.Platform Height (m)	19.81	24.38	25.90	26.21	30.48	38.15	46.33
Max.Horizontal Reach (m)	17.10	22.07	23.60	22.86	22.86	24.38	24.38
Safe Working Load (kg)	227	227	227	227	340	227	340
Platform Length (m)	A	0.91	0.91	0.91	0.91	0.91	0.91
Platform Width (m)	B	2.44	2.44	2.44	2.44	2.44	2.44
Height-Stowed (m)	C	2.72	2.80	2.80	3.05	3.07	3.05
Length-Stowed (m)	D	9.42	11.35	12.37	12.19	13.00	16.18
Width (m)	E	2.49	2.44	2.44	2.49	3.35	5.03
Wheel Base (m)	F	2.50	2.80	2.80	3.05	3.35	4.72
Ground Clearance-Center (m)	G	0.37	0.43	0.43	0.28	0.44	0.38
Weight (kg)	10,102	16,293	17,191	17,200	18,008	20,248	22,657
Power Source	Diesel Engine						

*Specifications will be changed by year of manufacture.

