

NEW RENTAL

LIGHT TOWER VT EVO LED320WX4

**SPECIALLY DESIGNED
FOR WIND FARM
AND SOLAR FARM
PROJECTS**



IMPROVEMENTS FROM VT8 (METAL HALIDE 1000WX4)

- ✓ ECONOMICAL FUEL CONSUMPTION (171L/120H)
- ✓ WIDER ILLUMINATED AREA (4200M2 => 4500M2)
- ✓ COMPACT SIZE: 2.5 X 1.2 X 2.45 METER (CHEAPER TO MOBILIZE)
- ✓ LONGER USAGE WITHOUT REFUELING (IMPROVE EFFICIENCY)

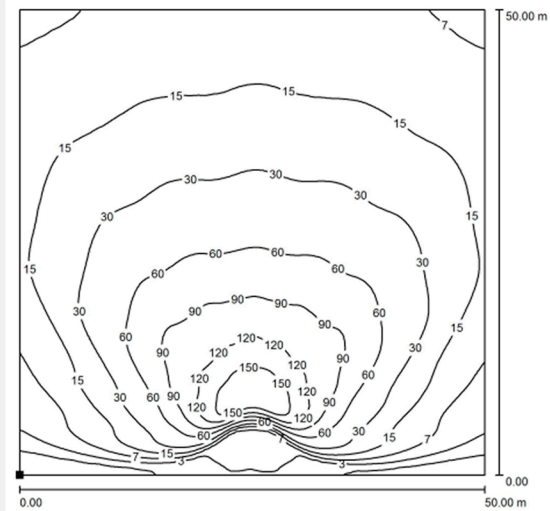


HOTLINE

024-3212-3556
sales@nishio.com.vn

www.nishio.com.vn

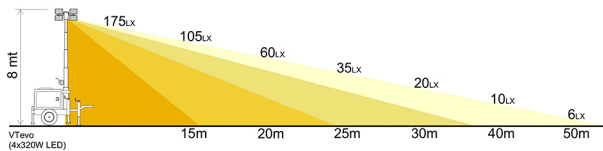
ILLUMINATION AREA



A powerful and compact solution for heavy-duty jobs



REAL LIGHT



TECHNICAL DATA

		VTevo
Min. dimensions (mm)	Length x Width x Height	2480 x 1190 x 2450
Max. dimensions (mm)	Length x Width x Height	2480 x 2400 x 8000
Dry weight (kg)		650
Engine models available		Yanmar 2TNV70
Avg. sound pressure	dB(A) @ 7m	59
Total running time (h)		171
Lifting system	M:Manual / H:Hydraulic	M
Mast rotation (°)		340
Wind speed resistance (km/h)		80
Lamps power (W)		4 x 320
Lamps type		LED
Total lumen (Lm)		188160
Illuminated area (m²)		4500
Alternator	kVA/V/Hz	3.5/220/50 - 4.5/240/60
Outlet socket	kVA/V/Hz	1/220/50 - 2/240/60
Tank capacity (liters)		120
Liquid containment tank (110%)	√:Yes / ●:No	√

GENERAC® G4 LED

HIGH EFFICIENCY LED
FLOODLIGHTS
DESIGNED BY GENERAC
MOBILE®



MCP - MANUAL CONTROL PANEL

THE MCP INCLUDES
FUEL LEVEL
GAUGE, ENGINE ALARMS,
STARTING KEY, ON/OFF
SWITCHES FOR LAMPS

Ha Noi Head Office:

Thach That-Quoc Oai IZ, Km 18 Thang Long Boulevard,
Quoc Oai Town, Quoc Oai District, Ha Noi.

Ho Chi Minh Office:

Room 208, Floor 2, Lot T5-2 and lot T6 Road D11B, High Technology
Zone, Tang Nhon Phu B Ward, Thu Duc City, Ho Chi Minh.

Branches: Hai Phong, Da Nang, Quang Nam, Vung Tau, Bien Hoa.