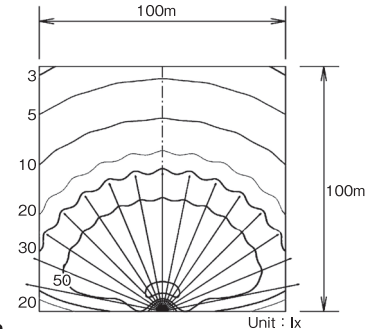


# Nishio Tellastar Series (Engine)

## Sky Tellastar (Self-Propelled Flood Light)



### Illuminated Area



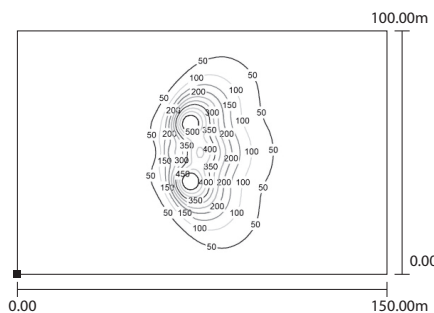
### Specifications

|                              |              |       |
|------------------------------|--------------|-------|
| Make                         | NISHIO       |       |
| Model                        | NT-15        |       |
| Bulb Capacity(watts × bulbs) | 1,000 × 15   |       |
| Bulb Configuration           | Metal Halide |       |
| Bulb Output(Lumens × bulbs)  | 109,000 × 15 |       |
| Depression Angles            | 110°         |       |
| Max. Heights(mm)             | 17,500       |       |
| Weight(kg)                   | 9,232        |       |
| Dimension                    | Length(mm)   | 6,770 |
|                              | Width(mm)    | 2,400 |
|                              | Height(mm)   | 2,710 |
| Turning Radius               | 360°         |       |
| Wheel Base(mm)               | 2,500        |       |
| Travel Speed(km/h)           | 2.0/4.0      |       |
| Fuel Tank Capacity(ℓ)        | Diesel/70    |       |

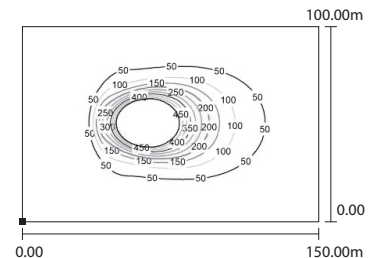
## NEW Sky Tellastar (Self-Propelled LED Flood Light)



### Illuminated Area (270°)

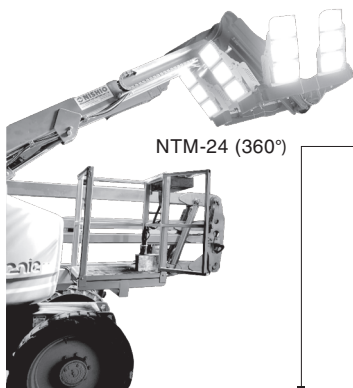


### Illuminated Area (180°)

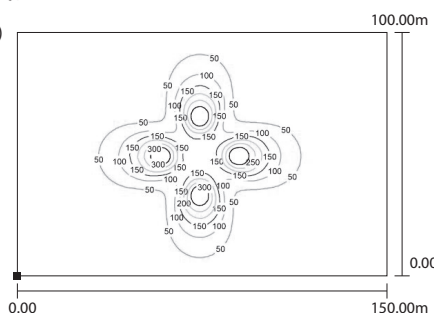


### NTM-24 improved points from NT-15:

1. Turn on/off: Faster
2. Weight: Lighter
3. Moving: 4 Wheel Drives
4. Transportation: Cheaper
5. Fuel consumption: Lower



### Illuminated Area (360°)



### Specifications

|                              |                  |       |
|------------------------------|------------------|-------|
| Make                         | NISHIO           |       |
| Model                        | NTM-24           |       |
| Bulb Capacity(watts × bulbs) | 350x24           |       |
| Bulb Configuration           | LED              |       |
| Bulb Output(Lumens × bulbs)  | 45,500 x 24      |       |
| Depression Angles            | 180°, 270°, 360° |       |
| Max. Heights(mm)             | 13,952           |       |
| Weight(kg)                   | 6,883            |       |
| Dimension                    | Length(mm)       | 6,230 |
|                              | Width(mm)        | 2,255 |
|                              | Height(mm)       | 2,260 |
| Turning Radius               | 360°             |       |
| Wheel Base(mm)               | 2,500            |       |
| Travel Speed(km/h)           | 8,0              |       |
| Fuel Tank Capacity(ℓ)        | 92               |       |