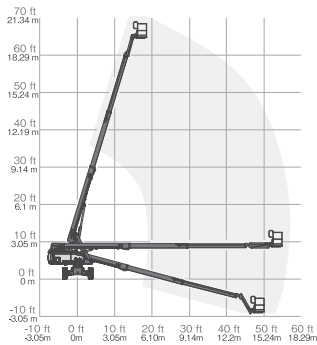
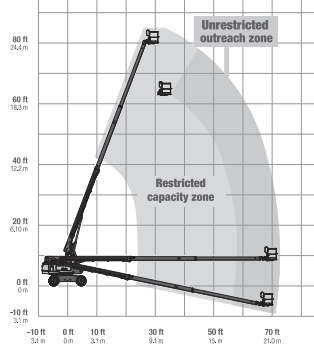
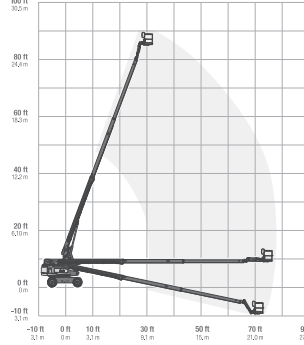
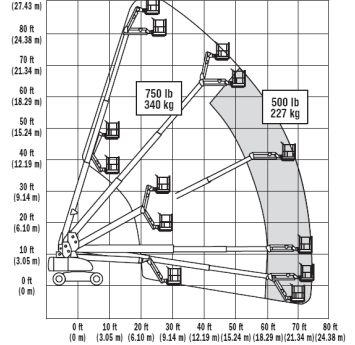
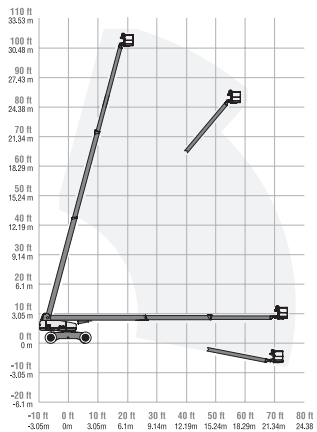
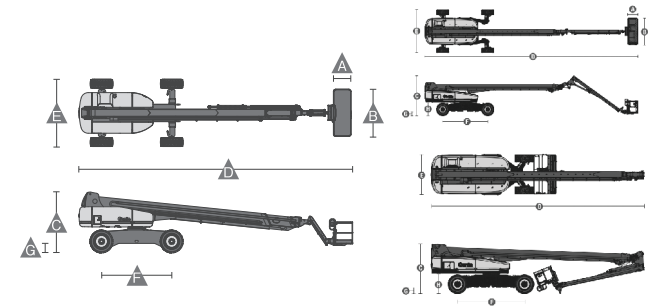
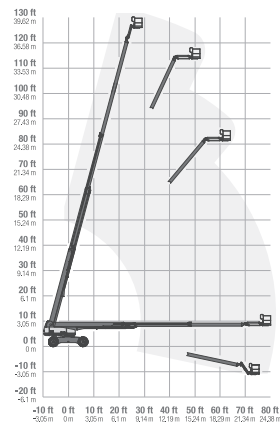
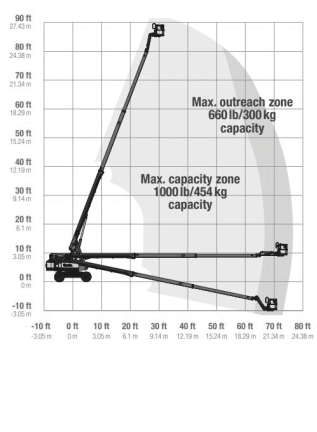
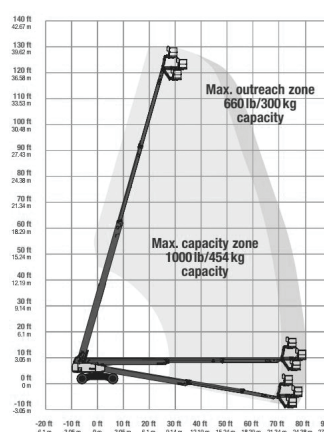
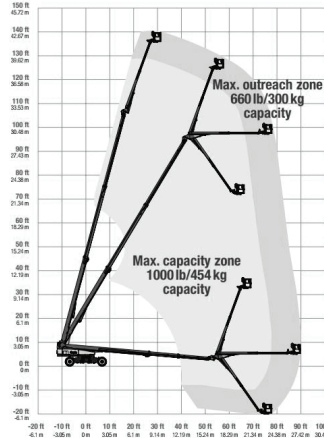
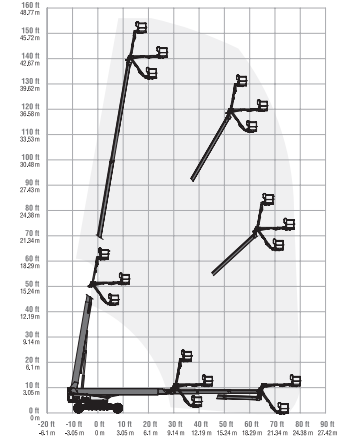


Telescopic Boomlift (Engine)

Telescopic Boomlift (Engine)

●S65

●S80

●S85

●860SJ

●S100

●S125

※ XC series:

- Dual lift capacity: 300kg (unrestricted) - 454kg(restricted)
- Room for up to three people on the platform
- Simple, zero-load field calibration
- Load Sense Technology:
The boom won't lift if the maximum load is exceeded

●S85 XC

●SX125 XC

●SX135 XC

●SX150


Specifications

Model	S65	S80	S85	S85 XC	860SJ	S100	S125	SX125 XC	SX135 XC	SX150
Max.Working Height (m)	21.81	26.38	27.90	27.91	28.21	32.48	40.15	40.10	43.15	48.33
Max.Platform Height (m)	19.81	24.38	25.90	25.91	26.21	30.48	38.15	38.10	41.15	46.33
Max.Horizontal Reach (m)	17.10	22.07	23.60	22.71	22.86	22.86	24.38	24.38	27.43	24.38
Safe Working Load (kg) (XC: unrestricted-restricted)	227	227	227	300-454	227	340	227	300-454	300-454	340
Platform Length (m)	A	0.91	0.91	0.91	0.91	0.91	0.91	0.91	0.91	0.91
Platform Width (m)	B	2.44	2.44	2.44	2.44	2.44	2.44	2.44	2.44	2.44
Height-Stowed (m)	C	2.72	2.80	2.80	2.80	3.05	3.07	3.05	3.05	3.05
Length-Stowed (m)	D	9.42	11.35	12.37	12.37	12.19	13.00	14.25	19.76	16.18
Width (m)	E	2.49	2.44	2.44	2.49	2.49	3.35	2.49	2.49	5.03
Wheelbase (m)	F	2.50	2.80	2.80	2.85	3.05	3.66	4.11	4.11	4.72
Ground Clearance-Center (m)	G	0.37	0.43	0.43	0.40	0.28	0.44	0.38	0.38	0.38
Weight (kg)	10,102	16,293	17,191	17,917	17,200	18,008	20,248	20,700	21,273	22,657
Power Source	Diesel Engine									

※Specifications will be changed by year of manufacture.