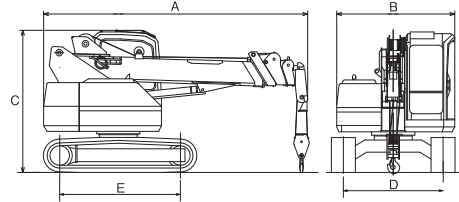


Crawler Crane 4.9ton Glassworker · Grantry Crane

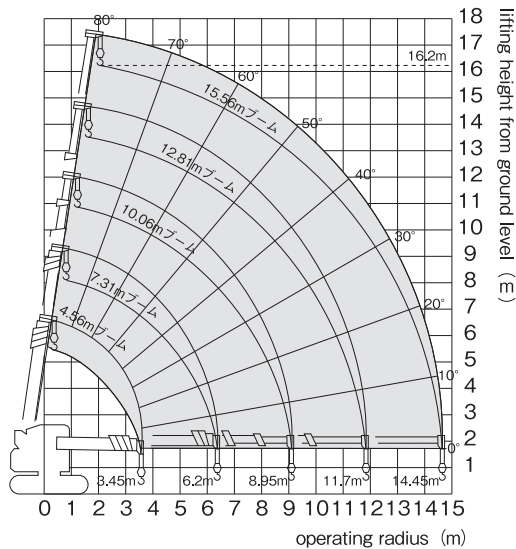
Crawler Crane 4.9ton



Dimension



Working Range Diagram

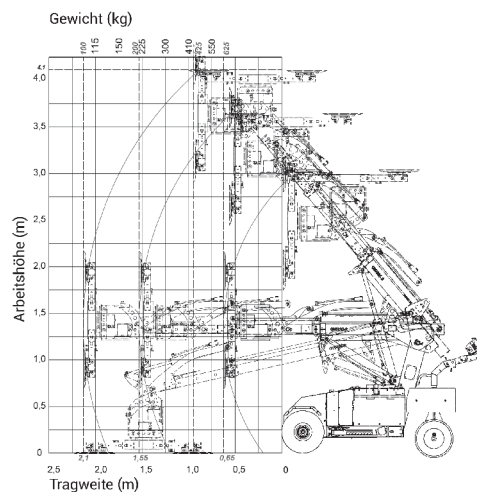


Specifications

Make	MAEDA	
Model	LC755	
Total Weight (kg)	8,800	
Dimensions (mm)	Overall Length	A 4,977
	Over Width	B 2,320
	Overall Height	C 2,700
	Track Gauge	D 1,870
	Length Of Track On Ground	E 2,868
	Min.Ground Clearance	380
Performance	Max.Lifting Load (ton×m)	4.9×2.1
	Max.Operating Radius (m×ton)	14.45×0.15
	Max.Lifting Height (m)	16.2
	Boom Length (mm)	4,560~15,560
	Boom Telescopic Speed (sec/m)	25/11.0
	Swing Speed (rpm)	2.1
Travel Speed (km/h)	2.9	
Fly Wheel House Power (kW[PS]/rpm)	44.1[60 ps]/2,000	
Fuel Tank Capacity (ℓ)	80	

Glassworker

Dimensions



Specifications

Make	Uplifter
Model	GW625
Load Capacity (kg)	625
Working Height (m)	3,646 Centre vacuum cross
Dead Weight (kg)	1,035 - 1,095
Length (m)	2,454
Width (m)	0,831
Indoor	Yes
Outdoor	Yes
Forward Scope (m)	1.49 - 2.10
Operating Time (hours)	up to 8.0

Gantry Crane



Specifications

Model	MT-II-1	
Capacity (kg)	1,000	
Dimensions	Total Length (mm)	2,100
	Total Width (mm)	3,100
	Effective Width (mm)	2,100
	Total Height (mm)	3,000
	Effective Crane Height (mm)	2,000